

# hushfree

Feel **free** to talk, to meet, to work.

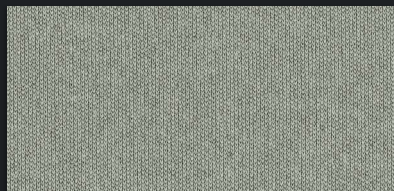


hushoffice

## SPECIFICATION | SPEZIFIKATION | SPÉCIFICATION | SPECYFIKACJA

# hushfree

### FABRIC COLOUR | STOFFFARBE | COULEUR DU TISSU | KOLOR TKANINY **Gabriel**



60140 light gray | hellgrau | gris clair | jasnoszary



60167 dark gray | dunkelgrau | gris foncé | ciemnoszary



61194 beige | beige | beige | beżowy



66228 blue | blau | bleu | niebieski



68255 light green | hellgrün | vert clair | jasnozielony



68252 yellow | gelb | jaune | żółty



64247 red | rot | rouge | czerwony



63115 orange | orange | orange | pomarańczowy

### BODY COLOUR | KORPUSFARBE | COULEUR DU CORPS | KOLOR KORPUSU

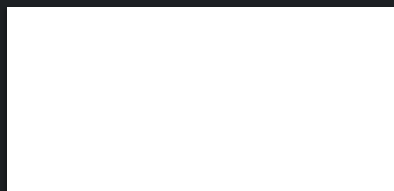
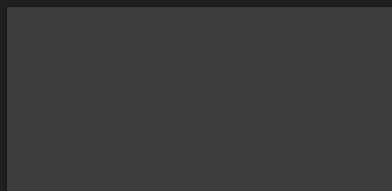
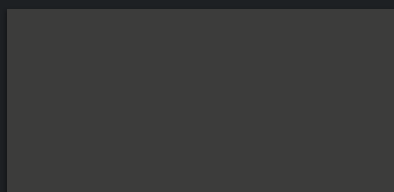


ABB white | weiss | blanc | biały



AGC cosmos gray | cosmos grau | cosmos gris | cosmos szary

### METAL COLOUR | METALLFARBE | COULEUR MÉTAL | KOLOR METALU



JGC cosmos gray | cosmos grau | cosmos gris | cosmos szary

For more information please visit [Hushoffice.com](https://hushoffice.com)

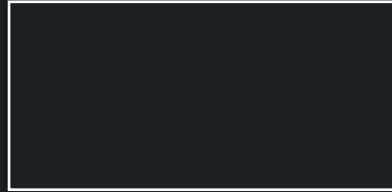
## SPECIFICATION | SPEZIFIKATION | SPÉCIFICATION | SPECYFIKACJA

# hushfree

### TABLETOP COLOUR | TISCHPLATTENFARBE | COULEUR DU PLATEAU | KOLOR BLATU



ABB white | weiss | blanc | biały



AGA black | schwarz | noir | aksmaitna czern



ADC oak | eiche | chêne | dąb

### DRY-ERASE BOARD (FRAME) | WHITEBOARD (RAHMEN) | TABLEAU EFFACABLE À SEC (CADRE) | TABLICZY SUCHOŚCIERALNA (RAMA)



JBM white (lacquer) | weiß (lack) | blanc (laque) | biały (lakier)



JGC cosmos grey (lacquer) | kosmosgrau (lack) |  
gris cosmos (laque) | cosmos szary (lakier)



MDN natural oak | natureiche | chêne naturel | dąb naturalny

### GLASS COLOUR | GLASFARBE | COULEUR DU VERRE | KOLOR SZKŁA



PRZ clear | sauberes | propre | przezroczyste



MGA frosted | gefrorenes | gelé | mleczne